

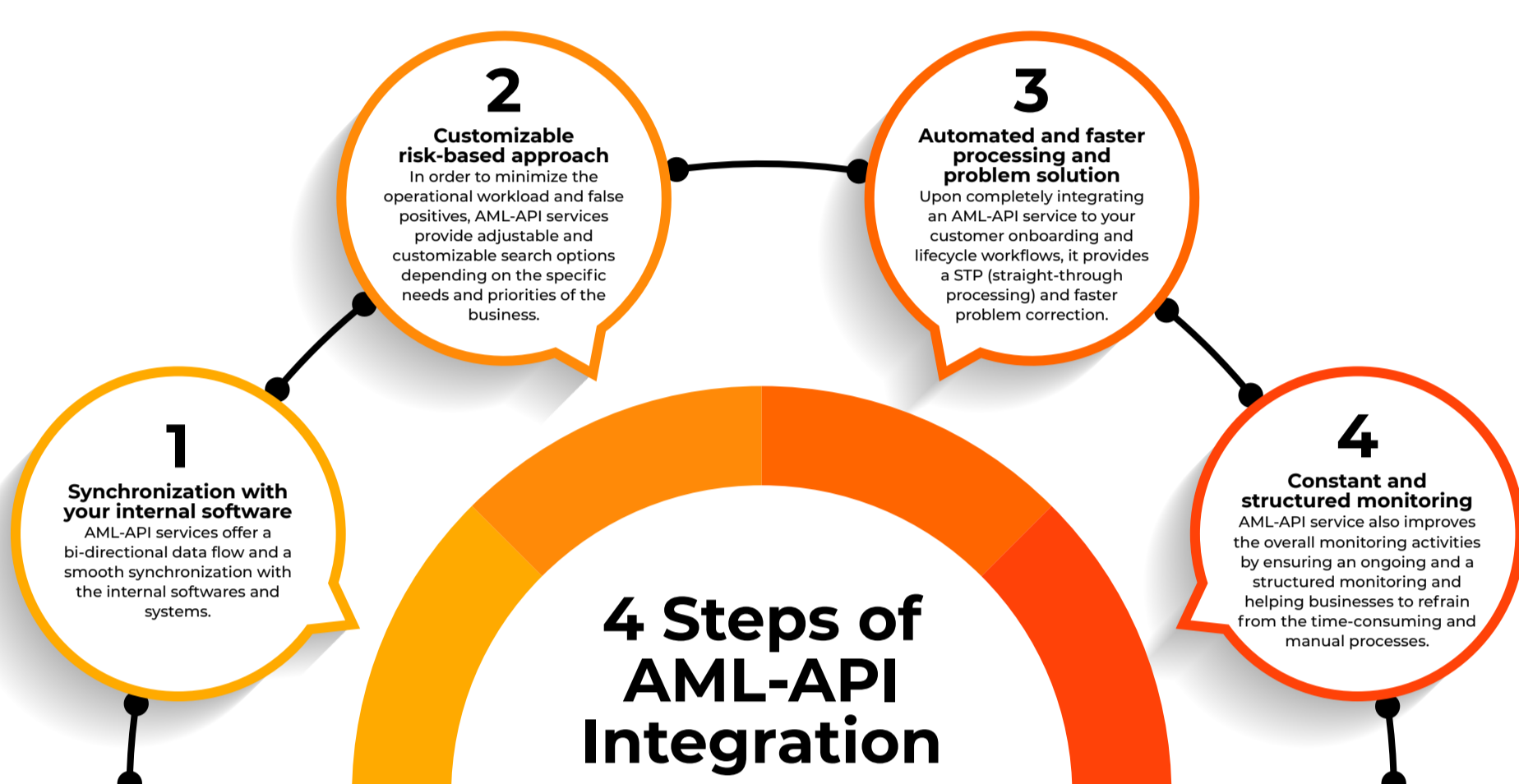
# INFOGRAPHIC: GUIDE TO YOUR AML-API SERVICE

AML-API services support businesses in managing their anti-money laundering (AML) and combating the financing of terrorism (CFT) efforts as well as the risk management processes in a more automated and efficient way.

AML-API service works by getting paired with the data collected and stored in the software systems of the business and activates screening processes for the PEP and sanction lists, adverse media, law enforcements and other risk-related procedures

With the AML focused API solution, it is possible for the businesses to pair their third party software programs which need to be monitored and checked against sanctions or PEPs.

**These applications include but are not limited to:**



## AML-API service aims to improve the risk management processes of the businesses by offering the following features:

- 1** Safer and faster customer identification and verification
- 2** Near-time monitoring and screening against sanction and PEP lists with a global scale and customized lists
- 3** Possibility to customize the preferred interval for the name and adverse media screening updates
- 4** Transaction monitoring
- 5** Detailed and customized reporting on an individual and global basis

## By integrating an AML-API service, your business can achieve and improve:

### Velocity

- Digitized and automated monitoring, detecting and problem solving features of the AML-API upgrade the velocity and agility in the organization
- The AML-API system regularly scans the PEP and sanction lists and ensures the checks are always up-to-date.
- In the event of special occasions in the sanctions, the API-AML service updates the lists on the next day.

### Quality

- AML-API service integration improves the overall quality of the businesses by providing faster and more precise updates.
- False positives are minimized thanks to the service quality of the AML-API services.

### Efficiency

- AML-API services have the capability of scanning through hundreds of PEP and sanction lists both locally and globally to ensure the most comprehensive risk management
- It is also possible to include other lists in the AML-API service depending on the demand or needs of the organizations such as individual black lists or lists of the banks banned by SWIFT.

**For more information book a meeting with our experts**

**References**

- Clever Soft. AML-Risk API Integration. Retrieved from <https://www.clever-soft.com/solution/aml-risk-api/>
- Clever Soft. CleverKYC. Retrieved from <https://www.clever-soft.com/solution/clever-kyc/>
- Comply Advantage. Transaction Monitoring and Screening API Documentation. Retrieved from [https://demo-sales-eu.tm.complyadvantage.com/docs/api/index.html?json&\\_gl=1\\*10f9900\\*\\_gcLau\\*NDg2NjAzNDNA5LjE3MTgzNzMIODc\\*\\_ga\\*MTQ4MTU2NzA0OC4xNzE4MzczNTk5\\*\\_ga\\_SPI5H3TF04\\*MTcxODM3MzU5OS4xLjEuMTcxODM3MzU5OS42MC4wLjA.#introduction](https://demo-sales-eu.tm.complyadvantage.com/docs/api/index.html?json&_gl=1*10f9900*_gcLau*NDg2NjAzNDNA5LjE3MTgzNzMIODc*_ga*MTQ4MTU2NzA0OC4xNzE4MzczNTk5*_ga_SPI5H3TF04*MTcxODM3MzU5OS4xLjEuMTcxODM3MzU5OS42MC4wLjA.#introduction)
- International Monetary Fund. Anti-Money Laundering and Combating the Financing of Terrorism (AML/CFT). Retrieved from <https://www.imf.org/en/Topics/Financial-Integrity/amlcft>

Request a Demo | [fineksus.com](https://fineksus.com)

Copyright © 2025 Fineksus

All rights reserved. No part of this publication may be reproduced, stored in a retrieval system, or transmitted, in any form or by any means, electronic, mechanical, photocopying, recording, or otherwise, without the prior permission of the copyright owners.